



3 Wheatley Drive Haxby

York, YO32 2WA

Guide Price £175,000



A SPACIOUS FIRST FLOOR 2 BEDROOM APARTMENT WITH A LAWNED REAR GARDEN SET IN THIS POPULAR LOCATION CONVENIENT FOR LOCAL AMENITIES AND WITH EASY ACCESS TO THE BY-PASS AND IN TO YORK. The property has the benefit of electric heating and double glazing, has a private entrance into a hall leading to the stairs to the first floor landing, lounge/dining room, well fitted kitchen, 2 good sized bedrooms and bathroom/w.c. Ideal for first time buyer, investor or to downsize in to. An internal viewing is recommended.

Hall

Entrance door, stairs to first floor

Landing

Doors leading to

Lounge

14'6" x 10'11" (4.42m x 3.35m)

Window to front, electric storage heater.
Door to

Kitchen

8'5" x 7'6" (2.59m x 2.29m)

Window to rear over looking the garden, range of fitted base and wall units.

Bedroom 1

11'8" x 10'2" (3.58m x 3.10m)

Window to rear, electric storage heater

Bedroom 2

9'8" x 8'5" (2.97m x 2.57m)

Window to front

Bathroom

6'3" x 5'4" (1.93m x 1.63m)

Window to rear, walk in shower, wash hand basin and w.c.

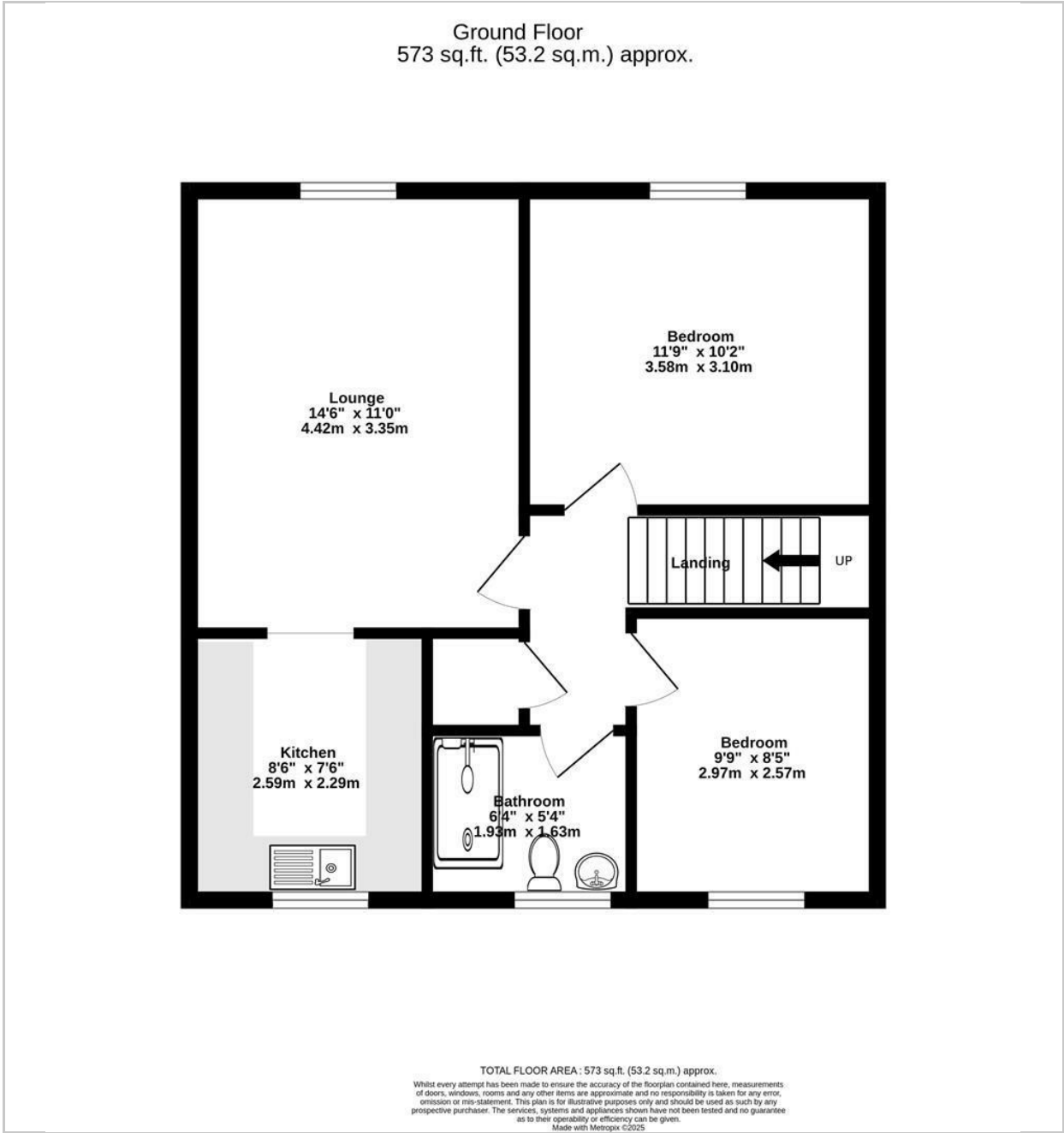
Outside

Private lawned rear garden





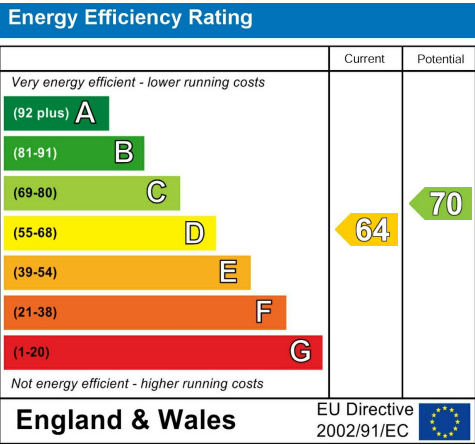
FLOOR PLAN



LOCATION



EPC



These particulars, whilst believed to be accurate are set out as a general outline only for guidance and do not constitute any part of an offer or contract. Intending purchasers should not rely on them as statements of representation of fact, but must satisfy themselves by inspection or otherwise as to their accuracy. No person in this firms employment has the authority to make or give any representation or warranty in respect of the property.